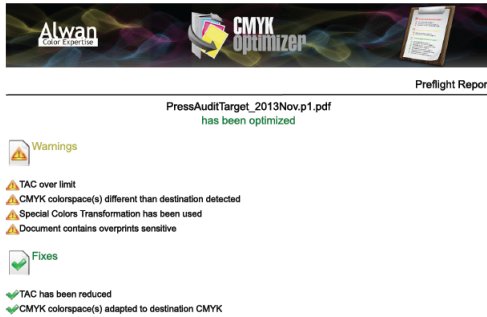


Evaluate the Results:

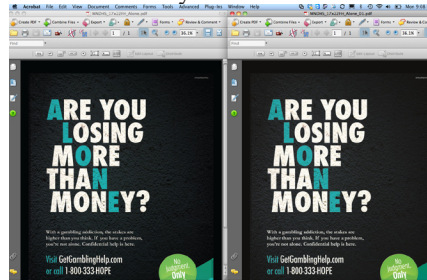
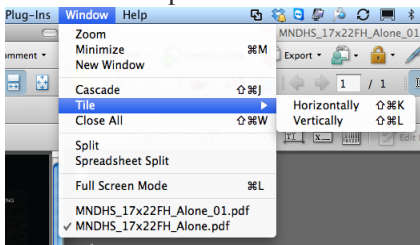
After a file has been processed, Alwan ColorHub will show you the Ink savings statistics in the Report section of the main interface. If the "Gain %" value is close to 0, the file probably has transparencies in the file and cannot be Optimized without allowing Alwan to flatten the file. If this is the case, please refer to the PDF Flattening tutorial.

Also, Please open the Report Folder (inside the Input folder that you configures for your queue. You will find a PDF and Text report of what Alwan did to the file. This is great to trace what is happening your files.

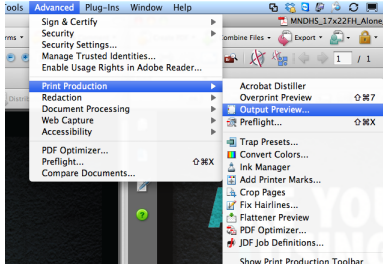


Visualize the Before and After result using Acrobat Pro

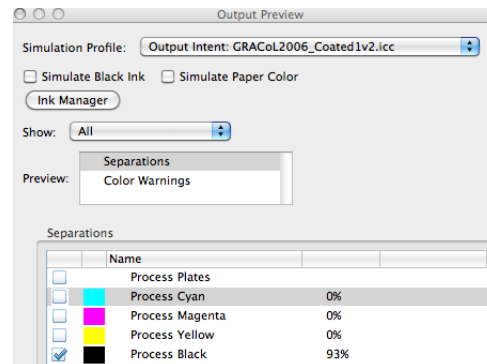
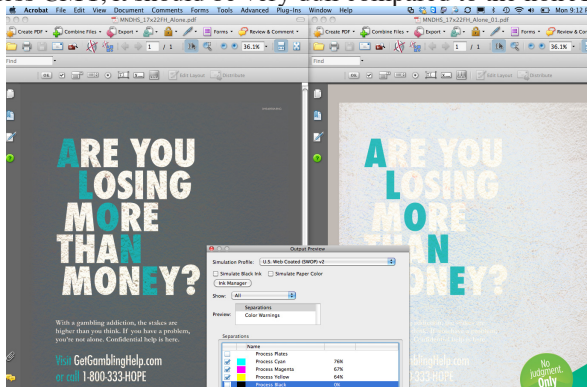
Open the before and after Alwan processed files in Acrobat. Tile them Vertically in order to see the two files side by side.



Depending on the version of acrobat, find Advance- Print Production- Output Preview to bring up the channel information of the file.



Turn off the K channel on both PDFs, this is the amount of CMY in both separations, the Alwan ColorHub optimized file should show a lot less CMY, it should be very dull compared to the non Alwanized file.



Next, turn on the K channel on both files and you should not see a difference in the reproduction of either file. Switch positions of the two files if you think you see a difference, it is probably an inconsistency of how the monitor is displaying the files on the left side versus right side.

Next turn off the CMY on both files to see how much more black in on the Alwan Optimized file. Again, understand that more black and less CMY means the file is using less ink.

Thank you for evaluating the Alwan Separated Files